



# KATSUYAMA

KATSUYAMA FINETECH (THAILAND) Co.,Ltd.

カツヤマファインテックタイランド



## ADDRESS



54 Moo 9 Tambon Thano Ampur Utai  
Pranakornsriayutthaya 13210 Rojana Industrial  
Tel : (035) 226-300-2 , (035) 331-539-41  
Fax : (035) 330939



## Company

Capital (資本金)	200,000,000 Baht
Shareholders (出資者構成)	Katsuyama Finetech Co.,Ltd. (日本) 100%
Board of Directors (役員構成)	Chairman (会長) : Mr.Soichi Katsuyama (勝山宗一) Managing Director (社長) : Mr.Yujiro Ota (太田雄二郎) Director (取締役) : Mr.Daisuke Suzuki (鈴木大輔)
Establishment (会社設立)	July-1995 Approved by the Ministry of Commerce (商務省認可)
BOI Approval (BOI 認可)	December-1995
Certified (ISO 認証)	IATF 16949:2016, ISO 9001:2015, ISO 14001:2015 Certified by LLOYD'S (LLOYD'S 認証)
Land Area (敷地面積)	32,160 m <sup>2</sup> (約 10,000 坪)
Factory 1 Building Area (第 1 工場)	6,695 m <sup>2</sup> (約 2,000 坪)
Factory 2 Building Area (第 2 工場)	1,640 m <sup>2</sup> (約 500 坪)
Factory 3 Building Area (第 3 工場)Tooling	896 m <sup>2</sup> (約 300 坪)
Factory 4 Building Area (第 4 工場)Mold Die	1,928 m <sup>2</sup> (約 600 坪)
Canteen Area (食堂)	500 m <sup>2</sup> (約 150 坪)
Warehouse Area (出荷倉庫)	2,133 m <sup>2</sup> (約 650 坪)
Number of Employees(従業員数)	Thai Staff (現地従業員) : 450 people Japanese (常駐日本人) : 2 people
Scope of Business (事業内容)	Manufacturing seat belt parts for automobiles (自動車用シートベルト部品製造) Manufacturing steering column parts for automobiles (自動車用ステアリングコラム部品製造) Cation Electro Deposit Painting (カチオン電着塗装請負加工)

## Tool Support Machine

Wirecut Electrical Discharge Machine	(ワイヤーカット放電加工機)	SODICK	5
Die Sinking Electric Discharge Machine	(型彫り放電加工機)	SODICK	1
Forming Grinding Machine	(成型研削盤)	OKAMOTO	2
Surface Grinding Machine	(平面研削盤)	OKAMOTO	2
Milling Machine	(フライス盤)	SHIZUOKA	2
Machining Center	(マシニングセンタ)	MAKINO	2
Lathe	(旋盤)	AMADA	1
Upright Drilling Machine	(直立ボール盤)	KIRA	1
Band Saw	(コンタマシーン)	LUXO	1
Laser Beam Machine	(レーザー加工機)	GRAND MASTER	1



## Inspection Equipment

Coordinate Measuring Machine	(3次元測定器)	MITUTOYO	3
Vision Measuring Machine	(画像測定器)	ARCS/O-DETECT	2
Tensile Strength Test Machine	(引張試験機)	SHIMADZU	2
Salt Spray Test Machine	(塩水噴霧試験機)	CY	1
Rockwell Hardness Testing Machine	(ロックウェル硬度計)	MITUTOYO	2
Micro Vickers Testing Machine	(マイクロビッカース硬度形)	AKASHI	1
Micro Scope	(デジタル顕微鏡)	NIKON	1
Contracter	(形状測定器)	MITUTOYO	1



## Production

500ton Progress Press Machine	(500 トン順送プレス)	AIDA	2
400ton Progress Press Machine	(400 トン順送プレス)	AIDA	2
300ton Progress Press Machine	(300 トン順送プレス)	AIDA	1
200ton Progress Servo Press Machine	(200 トン順送サーボプレス)	KOMATSU	2
200ton Progress Press Machine	(200 トン順送プレス)	AIDA	2
150ton Progress Press Machine	(150 トン順送プレス)	AIDA	1



110ton Single Press Machine	(110 トン単発プレス)	AIDA	2
80ton Single Press Machine	(80 トン単発プレス)	AIDA	6
80ton Single Press Machine	(80 トン単発プレス)	FONYU	1
60ton Single Press Machine	(60 トン単発プレス)	AIDA	1
45ton Single Press Machine	(45 トン単発プレス)	KOMATSU	3
45ton Single Press Machine	(45 トン単発プレス)	AIDA	1
45ton Single Press Machine	(45 トン単発プレス)	WASHINO	3
35ton Single Press Machine	(35 トン単発プレス)	AMADA	2
AC Resistance Welding Machine	(スポット溶接機)	PANASONIC	3
AC Resistance Welding Machine	(スポット溶接機)	NASTOA	1
AC Resistance Welding Machine	(スポット溶接機)	DAIDEN	1



Vibration Staking Machine	(バイブレーションカシメ機)	KATSUYAMA	7
Rivet Setter Machine	(リベットカシメ機)	FUKUI BYORA	3
Shot Blasting Machine	(ショットブラスト機)	SINTO	1
500L Vibratory Finishing Machine	(振動バレル研磨機)	THAI CRIPTON	7
1000L Vibratory Finishing Machine	(振動バレル研磨機)	THAI CRIPTON	2
150L Fluid Finishing Machine	(流動バレル研磨機)	THAI CRIPTON	2



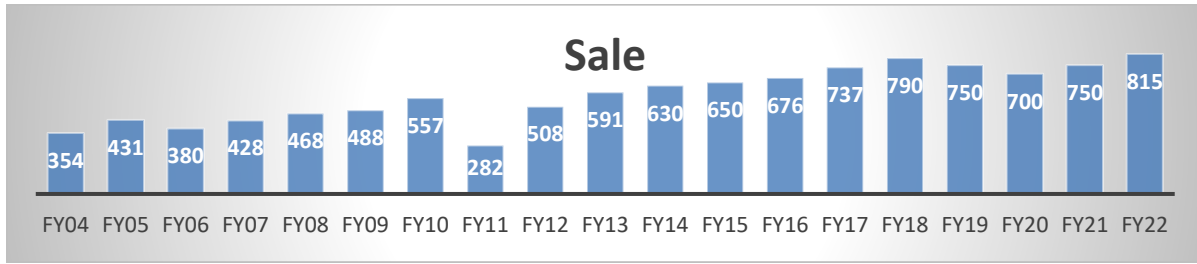
Cation Electra Deposit Painting Line	(カチオン電着塗装ライン)	PARKER ENGINEERING	1
Heat Treatment Furnace	(連続式焼入れ焼き戻し炉)	TOKYO GUSDENRO	1
100ton Injection Molding Machine	(100 トン縦型射出成型機)	JSW	1





## Sale Record

Unit : mil.baht  
 単位 : 百万パーツ



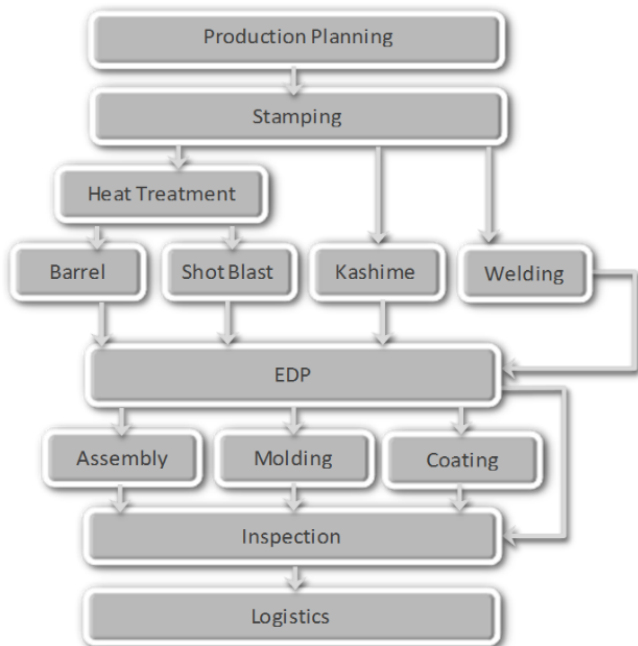
## Main Customer



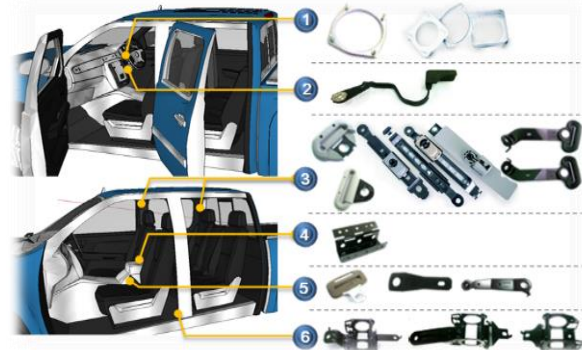
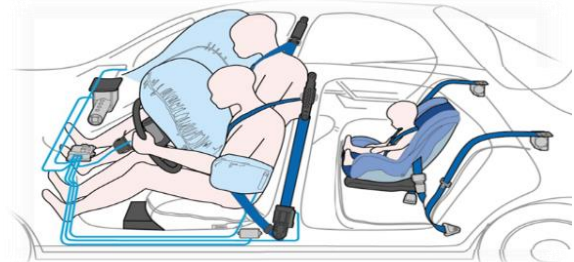
## Water Flood ( October 2011 )



## Process Chart



## Sample Products



IATF 16949:2016  
 ISO 9001:2015  
 ISO 14001:2015 CERTIFIED

To be always reliable producer  
 of safety parts for worldwide customers.